



Ardaman & Associates, Inc.

Geotechnical, Environmental and  
Materials Consultants

October 30, 2024  
File No. 24-40-1991

Ox Bottom Mortgage  
4708 Capital Circle Northwest  
Tallahassee, Florida 32303  
Email: [ighazvini@gmail.com](mailto:ighazvini@gmail.com)

Attention: Mr. Jason Ghazvini

Subject: Dove Pond Inspection

Dear Jason:

As requested, the undersigned visited the dam site to review the condition of the dam in conjunction with the Operations and Maintenance Plan dated October 11, 2021 prepared by Moore Bass. In addition, the condition of the dam for the sediment pond was reviewed. The following describes the observations during this review.

The dam for Dove Pond is up to approximately 20 feet high and about 1,320 feet long. It has a concrete-lined emergency spillway and a 24-inch ductile iron outfall pipe. The upstream slope is 3 horizontal to 1 vertical and the downstream slope is 5 horizontal to 1 vertical.

The water level was measured by SandCo in Dove Pond and reported to be approximately at elevation 92.86 feet and the water level for the tailwater on the downstream toe was reported to be 88.06 feet.

The dam was visited on September 4<sup>th</sup> and 17<sup>th</sup> and October 16<sup>th</sup>, 2024. The initial visits noted the need for mowing and small woody vegetation removal at the dam toe before further review. The following items were reviewed from item "C" of the referenced Operation and Management Plan:

- On the crest and side slopes of the dam look for eroded areas, animal burrows, trees or woody shrubs that have taken root, subsidence or sloughing-off of soil, or cracks in the soil. Check for debris that may have lodged on the fence, around the inflow pipe, or along the upper edge of the spillway on the inside of the pond.
- Note any bare spots or areas of dead vegetation, including the wetland mitigation areas, that may indicate disease or pest infestation.
- Look for any subsidence or new depressions in the soil near the toe of the slope. This may be indicative of sinkhole formation.

3175 West Tharpe Street, Tallahassee, Florida Phone: (850) 576-6131

Florida: Bartow, Cocoa, Fort Myers, Miami, Orlando, Port St. Lucie, Sarasota, Tallahassee, Tampa, West Palm Beach

Louisiana: Baton Rouge, New Orleans, Shreveport

Texas: Houston

- On the crest of the dam, look for dips or sunken areas that could indicate subsidence, especially over or around the outfall pipe. Ensure that the top of the dam is level and uniform along its entire length.
- Inspect the retaining wall and concrete spillway for cracking, uplift, undermining, subsidence, or tilting. Note any significant seepage from the weep holes in the spillway or wall.
- Note any indication of rapidly dropping water levels in Dove Pond, or vortexes or whirlpools on the water surface. This could be an indication of sinkhole activity.

The 24-inch pipe and its valve as well as the Electric Transmission Line were not reviewed during the site visits.

The result of these reviews found that several of the vertical weep holes in the spillway slab had vegetation growing in them that need to be cleaned out. Otherwise, only de minimis bare spots, erosion, and cracks in the spillway and spillway walls were noted.

The condition of the dam and spillway was documented in photographs taken along the crest at about 100-foot intervals (Southwest to Northeast), upstream and downstream slopes at about 200-foot intervals (Southwest to Northeast upstream and Northeast to Southwest downstream), and along the spillway at about 50-foot intervals (upstream to downstream). Photographs were taken looking forward and behind at each location. The thumbnails of these photographs are attached and the full photograph files are made available.

If you have any questions about this report or if we can be of further assistance, please contact us.

Very truly yours,  
ARDAMAN & ASSOCIATES, INC.  
Fl. Registry No. 5950



Michael S. Wilson, P.E.  
Vice President/Branch Manager  
Fl. Eng. License No. 46088

MSW/ms

This item has been digitally signed and sealed by Micheal S. Wilson, P.E. on the date indicated adjacent to the seal. Printed copies of this document are not considered signed and sealed and the signature must be verified on any electronic copies.



Dove Pond Crest 16October2024



IMG\_1323.JPG



IMG\_1324.JPG



IMG\_1325.JPG



IMG\_1326.JPG



IMG\_1327.JPG



IMG\_1328.JPG



IMG\_1329.JPG



IMG\_1330.JPG



IMG\_1331.JPG



IMG\_1332.JPG



IMG\_1333.JPG



IMG\_1334.JPG



IMG\_1335.JPG



IMG\_1336.JPG



IMG\_1337.JPG



IMG\_1338.JPG



IMG\_1339.JPG



IMG\_1340.JPG



IMG\_1341.JPG



IMG\_1342.JPG



IMG\_1343.JPG



IMG\_1344.JPG



IMG\_1345.JPG



IMG\_1346.JPG



IMG\_1347.JPG



IMG\_1348.JPG



IMG\_1349.JPG



IMG\_1350.JPG



IMG\_1351.JPG



IMG\_1352.JPG



IMG\_1353.JPG



IMG\_1354.JPG



IMG\_1355.JPG



IMG\_1356.JPG



IMG\_1357.JPG



Dove Pond Crest 16October2024



IMG\_1358.JPG



IMG\_1359.JPG



IMG\_1360.JPG

## Dove Pond UpstreamSlope 16October2024



IMG\_1379.JPG



IMG\_1380.JPG



IMG\_1382.JPG



IMG\_1383.JPG



IMG\_1384.JPG



IMG\_1385.JPG



IMG\_1386.JPG



IMG\_1387.JPG



IMG\_1388.JPG



IMG\_1389.JPG



IMG\_1390.JPG



IMG\_1391.JPG



IMG\_1392.JPG



IMG\_1393.JPG



IMG\_1394.JPG



IMG\_1395.JPG



IMG\_1396.JPG



IMG\_1397.JPG



IMG\_1398.JPG



IMG\_1399.JPG



IMG\_1400.JPG



IMG\_1376.JPG



IMG\_1377.JPG



IMG\_1378.JPG



## Dove Pond Downstream Slope 16October2024



IMG\_1362.JPEG



IMG\_1363.JPEG



IMG\_1364.JPEG



IMG\_1365.JPEG



IMG\_1366.JPEG



IMG\_1367.JPEG



IMG\_1368.JPEG



IMG\_1369.JPEG



IMG\_1370.JPEG



IMG\_1371.JPEG



IMG\_1372.JPEG



IMG\_1373.JPEG



IMG\_1374.JPEG



IMG\_1375.JPEG



IMG\_1360.JPEG



IMG\_1361.JPEG



## Dove Pond Spillway 16October2024



IMG\_1406.JPEG



IMG\_1407.JPEG



IMG\_1408.JPEG



IMG\_1409.JPEG



IMG\_1410.JPEG



IMG\_1411.JPEG



IMG\_1412.JPEG



IMG\_1413.JPEG



IMG\_1414.JPEG



IMG\_1415.JPEG



IMG\_1416.JPEG



IMG\_1417.JPEG



IMG\_1418.JPEG



IMG\_1419.JPEG



IMG\_1420.JPEG



IMG\_1421.JPEG



IMG\_1422.JPEG



IMG\_1423.JPEG



IMG\_1424.JPEG



IMG\_1425.JPEG



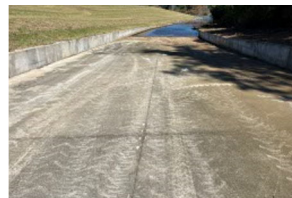
IMG\_1426.JPEG



IMG\_1427.JPEG



IMG\_1428.JPEG



IMG\_1429.JPEG



IMG\_1430.JPEG



IMG\_1431.JPEG



IMG\_1432.JPEG



IMG\_1433.JPEG



IMG\_1434.JPEG



IMG\_1435.JPEG



IMG\_1436.JPEG



IMG\_1401.JPEG



IMG\_1402.JPEG



IMG\_1403.JPEG



IMG\_1404.JPEG

Dove Pond Spillway 16October2024



IMG\_1405.JPEG



## Dove Pond West Approach 16October2024



IMG\_1319.JPG



IMG\_1320.JPG



IMG\_1321.JPG



IMG\_1322.JPG



IMG\_1316.JPG



IMG\_1317.JPG



IMG\_1318.JPG